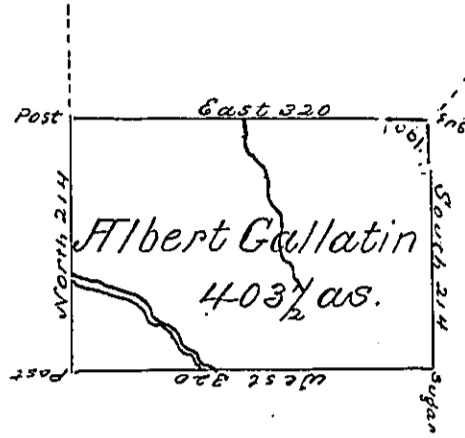


Sally Wallery

Robt. Patton Esq.



Jno. Parry, Clockmaker

Jno. Hoge

Situate on the waters of Lake Erie in Allegheny County District No. 1, Survey'd 21 June 1794 to Albert Gallatin on his Warrant dated 13 April 1792 Containing four hundred three acres and a half & allowe

Danl. Brodhead Esq }
 Surv. Genl. }

Thos. R. obliterated

IN TESTIMONY that the above is a copy of the original remaining on file in the Department of Internal Affairs of Pennsylvania, made conformably to an Act of Assembly approved the 16th day of February, 1833, I have hereunto set my Hand and caused the Seal of said Department to be affixed at Harrisburg, this third day of October 1899

Jameson Pitta
 Secretary of Internal Affairs.